

Longlands

Large Book of Adventures





*So many adventures
to be had...*

Spot red deer and meet Exmoor ponies on a 4x4 Safari. Drive along the rugged coastline in search of secret beaches. Walk the three and a half miles of stunning golden sands on Woolacombe beach. Hack to Hunters Inn. Surf some waves: long board, short board, body board or no board! Go rock pooling at Tunnels Beaches. Paint your own Pottery. Weave through the wooded valleys and spoil yourself with a Devon Cream Tea at Watersmeet. Count the wild goats in the Valley of Rocks. Take a day trip and explore the beautiful island of Lundy.

*So many places to
discover & explore...*

Find the secret passage in Dunster Castle. Spy on bats and take a carriage ride at Arlington Court. Meet the Exmoor Beast at Exmoor zoo. Swim with the Sea Lions at Combe Martin Dinosaur Park. Explore the Dungeon Labyrinths at Watermouth Castle. Get wet and wild at Watermouth Theme Park. Go steaming at Woody Bay Station. Experience the unique Victorian Cliff Railway between Lynton and Lynmouth. Muse over the Sculptures in the Broomhill Sculpture Garden. Journey from an Exmoor stream to the Atlantic Ocean at the Ilfracombe Aquarium. Admire the beautiful Palladian Castle Hill. Discover the timeless village of Clovelly. Relax in gorgeous gardens including the enchanting and acclaimed RHS Rosemoor.

*The hardest thing
is choosing!*

Adventures & Activities

We could quite easily fill a month with things to do and places to go in North Devon and Exmoor! In this book we share with you our favourite activities, places to visit, secret beaches with a bit of history and a few interesting facts thrown in!

To help you choose from such a long list we've hotly debated, argued and fought and finally agreed on what we would do if we were here for just a weekend and if we were here for longer.

We do hope you will have a wonderful time, however long you are staying with us!

Activities at Longlands..... P4 - 5

Adventures & Activities in the AreaP6 - 7

Rainy Day Suggestions

but also great in sunshine!.....P8 - 9

Places to Visit.....

Lynton & LynmouthP10 - 11

Woolacombe & Morteohoe.....P12 - 13

Georgeham & Croyde.....P14

Porlock P15

Ilfracombe..... P16 - 17

DulvertonP18

DunsterP19

Further afield..... P20

Beaches & Gardens.....P21

Best forP22 - 23

Eating at Longlands.....P24 - 25

Local Pubs & Restaurants P26 - 27

Staying a weekend?

Our ideal weekend: Head to Woolacombe to catch some waves or walk on the beach. Come back via Ilfracombe and indulge in a Joe Delucci ice cream on the Harbour. Head to Lynton & Lynmouth. Walk along the river Lyn and up through the wooded valley to Countisbury. Enjoy Sunday lunch at the Blue Ball. Take the coast path back down to Lynmouth. Enjoy the views and say hello to the Exmoor ponies! Potter around the shops and enjoy a Devon cream tea in one of the many tea rooms. Head home through Valley of Rocks and Woody Bay!

Staying a bit longer?

Visit Dulverton, stopping at the Tarr steps on the way. Lunch at Tarr Farm or Woods in the town. Take a tour of Dunster, the Castle and shops. Enjoy lunch or a cream tea at Tessa's. Return home on the coast road and Porlock and enjoy the stunning views.



Discover Longlands

Enjoy stream side walks and nature trails. Discover deer and badger tracks amongst the trees. Build a den. Jump off the pontoon into the lake or row around the island. Dangle a line from the jetty and wait for a fish to bite. Weave through the ancient beech woods and discover old cart tracks and new animal trails. Catch butterflies. Fly a kite. Be mesmerised by dragonflies. Perfect your petanque technique. Build an even bigger Giant Jenga tower. Race up hills and admire the views over the sea. Go on a treasure hunt. Don your raincoat and take a wellie walk. Pore over star maps. Gaze at the first dark sky reserve in Europe. Identify the constellations above. Admire the Milky Way.





Enjoy a soak in our hot tub

Our cedar wood hot tub is positioned in its very own terrace above the lake, with views out across the valley and towards the sea and setting sun.

To give you maximum privacy it is somewhat away from the lodges, on its own terrace, in the bank above the lake. It even has its very own changing room and outdoor shower.

Our hot tub can fit up to 6 people and we provide towels, fruited iced water, glasses! Prosecco, wine, beer & cider are also available. Just note your purchases on the clipboard and we can settle up at the end of your stay! The sunset hour is particularly magical!

If you want to book an hour just text us on 07747 023167 or 07919 561406.

Lets To Do!

Longlands has a wild swimming and boating lake and one skiff: Little Bird, so you can race around the island or laze in the water swimming with the wildlife! The rowing boat can take one adult and one child. Life jackets of varying sizes are provided.

There are stream walks and nature trails in our woods, and lots of sticks with which to practice den building. We have a number of outdoor games including petanque / boules with its own court above the football field, skittles, rounders and badminton, all of which can be played in the lakeside meadow or on the football field. There is a football goal on the football field, a games terrace above it and a basketball & netball near the Larder, along with giant chess. So score a goal, smash a skittle, shoot a hoop, check mate!

Our streamside and woodland walks are very sheltered, so are excellent for rainy days. Bug hunt along the stream, discover animal tracks and perhaps even spot deer in the woods.

Next to the Longlands Larder there is a covered area with Table Tennis & Giant Jenga and within the shop there are colouring and activity books to provide endless entertainment even on the wettest of days.

Exmoor is the best place for stargazing in the UK, according to the Campaign for Dark Skies. In fact it was the first designated International Dark Sky Reserve in Europe - and Longlands looks directly on to it - Definitely worth staying up for on a clear night.

So many adventures to be had...

Take a 4x4 Safari. Learn to Surf. Try Coasteering. Abseil down a rock face. Fly like a Bird! Get on your bike! Climb up a hill or race along the coast path. Hack to Hunters Inn. Gallop along the beach. Wander through ancient woods. Discover hidden valleys. Stroll along the Tarka Trail and admire stunning views of the North Devon & Exmoor coast!

If you are looking to explore Exmoor there is no better way than by 4x4. You will see red deer, meet Exmoor ponies, learn a bit about the area and not get lost! There are two different safari providers that we recommend. Which you choose really depends on where you want to start and end. Daphne runs Exmoor Wildlife Safaris taking groups of up to 8 and dogs! She starts at The White Horse Inn in Exford, TA24 7PY. Call her on 07977 571494. Richard runs Discovery Safaris with groups of up to 6. He departs from the Village Hall in Porlock, TA24 8QD. Call him on 01634 363444.

Walk, surf or swim at the award winning Woolacombe Beach. Its three and a half miles of beautiful golden sands are only 20 minutes away. Surf lessons and equipment are available from Hunter Surf. The shop is at the far end of the Woolacombe Car Park, just off the beach.

Call 01271 870543 / huntersurf.com

In the absence of good surf give stand up paddle-boarding (SUPing) a go with Active Escape at Watermouth, EX34 9SJ. Call 01271320745. Our family love it, and it's a fantastic way to see the coast and reach hidden beaches. Alternatively take a kayak tour from Combe Martin with Gary at Surfside. Call 01271 883220.

For those wanting an adventure with an adrenaline rush try Coasteering, with either Xtreme Coasteering at Hele, (call Sue on 07412 603116), or from Watermouth with Active Escape (01271 320745). There's also rock climbing and abseiling in the Valley of Rocks or perhaps mountain biking along some of Exmoor's 400 miles of bridleways. Both these activities are provided by Exmoor Adventures. Call Dan on 07976 208279.

For a completely different view of the North Devon Coast take to the air on a tandem hang glide with Fly Like a Bird. Most flights are over Woolacombe Beach with stunning views out to Lundy.

Call Sam on 07875 247389 / flylikeabird.co.uk

The Tarka Trail, with its stunning views of the North Devon coast, is only minutes away from Longlands, Heddon Valley, Watersmeet and Valley of Rocks are not much further. We have numerous books full of local walks or maps of Exmoor walks that guests can borrow.



If you are a keen cyclist and have brought your bike with you, book a guided ride with Propello to enjoy stunning views, quiet roads and a real sense of achievement, whatever your ability. Cycling on Exmoor and the surrounding area is a climber's delight with numerous entries in the official 100 Greatest Cycling Climbs in Britain Guide. Exmoor is also home to the famous Exmoor Beauty & Exmoor Beast Cycle sportive, the newly created Smuggler sportive and a stage of the Tour of Wessex and Tour of Britain! To book a guided ride with a fully qualified coach call Rob on 07779 136840 / propello.bike

For more sedate and relaxed cycling, hire a bike from Bike Trails at Fremington Quay (EX31 2NH) and take off down the Tarka trail to Instow, or on to Bideford or even Torrington! The route is flat so perfect for those still finding their peddling feet! We like to stop at John's of Instow for a pasty or pie, then cycle back to the Fremington Quay Cafe for a slice of something nice! Call Simon to book your bikes on 01271 372586 or 07788 133738.

If you prefer a bike with an engine then quad biking is for you. Quad Biking Devon (EX34 9RW) cater for all ages from 6 year and up, and for all abilities. And don't worry about the weather as apparently "the wetter, the better!" Call 01271 862247.

Dean Riding Stables (EX31 4PJ), just over the hill from Longlands, offer lessons or hacks over Exmoor and down to Hunters Inn. Call Tracey or Ashley on 01598 763565. Outovercott (EX35 6JR) also offer riding lessons and hacks through Valley of Rocks & Lee Abbey. Call Jim or Sue on 01598 753341. To ride on Woolacombe beach and through the dunes call Woolacombe Riding Stables (EX34 7AE) on 01271 870260.

Take a Sea Safari from Ilfracombe Harbour and enjoy a totally different view of the North Devon coast. Spot a dolphin. Spy a seal. Bounce over some waves and zoom over the water. Call 07827 679189.

Escape to the magical island of Lundy for the day. It's a two hour boat ride from Ilfracombe. Spot a puffin. Meet a Lundy pony. Take a walk and hunt for the Lundy Letterboxes. Admire the views. Enjoy a delicious meal & pint at the Marisco Tavern. Call 01271 863636.

Don't forget to arrange for Dog Sitting with Trudie. Call her on 07792 536493.





*So many places to
discover & explore*

Whatever the weather, but particularly good for
rainy days and children of all ages....



Great days out come rain or shine!

Exmoor Zoo (5 miles): Meet the Beast of Exmoor walk on the wildside, be a keeper for a day, feed the lemurs, meerkats and penguins. EX31 4SG / 01598 763352 / exmoorzoo.co.uk

The Wildlife and Dinosaur Park in Combe Martin (2 miles): Swim with sea lions, feed the lions, shadow a keeper, or fly a bird of prey. EX34 0NG / 01271 882486 / cmwdp.co.uk

Arlington Court (4 miles): Discover a house full of treasures and secrets, spy on rare horseshoe bats, enjoy a carriage ride and explore the National Trust Carriage museum.
EX31 4LP / 01271 850296 / nationatrust.org.uk/arlington-court

The Aquarium in Ilfracombe (9 miles): Journey from an Exmoor stream to the Atlantic Ocean without ever leaving the Old Lifeboat House. EX34 9EQ / 01271 864533 / ilfracombeaquarium.co.uk

Watermouth Castle Theme Park (5.5 miles): Descend into the dungeons, get lost in the Maze, marvel at the Watershow Extravaganza, get wet and wild in the water and adventure park.
EX34 9SL / 01271 867474 / watermouthcastle.com

Woody Bay Station (6.5 miles): Enjoy the last narrow-gauge railway adventure and see the start of an immense restoration project to restore the legendary Lynton and Barnstaple Railway. A must for any small Thomas the Tank Engine fan! EX31 4RA / lynton-rail.co.uk

Paint a Pot, Braunton (13 miles): Indulge your inner artist and create a ceramic masterpiece! They will even post your creation home to you. EX33 2JL / 01271 813999 / paintapot-braunton.co.uk

Rock & Rapids, South Molton (16 miles): Try your hand at climbing the indoor climbing wall.
EX36 3NA / 01769 573380 / rockandrapidadventures.co.uk

Air Extreme (10 miles): Catch some Air! Get bouncing at Air Extreme in Barnstaple! All indoors so good for the odd rainy day! Those who don't jump, will never fly! EX31 3TA / 01271 349806 / air-extreme.co.uk

The Big Sheep, Bideford (22miles): Ride a tractor, a train, the piggy pull along, a swan pedal or the vintage pony carousel. Race a sheep, cuddle a rabbit, somersault on the Jumping Pillow or whizz down the slide and drop into the ball pit. The perfect day out for younger children.
EX39 5AP / 01237 472366 / thebigsheep.co.uk

The Ultimate Adventure Centre, Bideford (22miles): Wipeout on the ultimate assault course, brave the high wires, zoom down the hill on a mountain board, get giddy zorbing, climb the wall, kayak on the Torridge estuary. The ultimate adrenaline rush for older children, teenagers and dare devil adults! Voted No 1 Top Adventure weekends for kids. EX39 5AP / 01237 880028 / ultimateadventurecentre.com

Dunster Castle near Minehead (28 miles): Find the secret passage, explore the crypt, play the piano, enjoy snooker, handle a real shot gun, enjoy breathtaking views across Exmoor and the Bristol Channel or lose yourself in the subtropical gardens. TA24 6SL / 01643 821314 / nationaltrust.org.uk/dunster-castle

Don't forget to arrange for Dog Sitting! Call Trudie on 07792 536493.



Lynton & Lynmouth

The beautiful Victorian towns of Lynton and Lynmouth, known as England's Little Switzerland, are only twenty minutes away and definitely worth visiting, whatever your length of stay! They owe much to Sir George Newnes, the publisher of Sherlock Holmes, who financed the Cliff Railway, Town Hall and Church. Their picturesque and peaceful setting has charmed Shelley, Coleridge, Wordsworth and R.D Blackmore, providing inspiration and, in the case of Lorna Doone, some of the location for the story.

Getting There

The most exciting and scenic way to reach Lynton is via the back roads. Not for those who are afraid of heights, steep hills or reversing!

Turn left out of Longlands and take the first left to Hunters Inn & Trentishoe. Enjoy the fantastic views over the coast and marvel at the magical woods on your way to Hunters. At Hunters turn left up a very steep hill! Pass a white and red trim cottage and turn left. Drive through Martinhoe then turn left off the road, effectively going straight on, towards Woody Bay. Follow the narrow, tree-enveloped road through Woody Bay, enjoying the view from the highest sea cliffs in mainland UK! Pass Lee Bay (worth stopping and visiting) and Lee Abbey. Go slowly through Valley of Rocks and enjoy the awesome rock structures and spot wild goats and Exmoor ponies. Pass the Lynton cricket ground and pavilion - you will soon be on Lynton High Street. Park outside the candle shop or in the two other car parks: one in the centre of the town and one at the far end.

Alternative route: take the A39 and follow the signs!



What to Do

Lynton has some lovely shops. Don't miss the Arts & Crafts Centre. The fudge alone makes it worthwhile never mind all the beautiful present possibilities!

The delightfully small and dainty Cinema, seating only 68 people, sits behind the Arts & Crafts Centre. With a population of only 2000, Lynton is the smallest town in the country to have it's own cinema! Visit lyntoncinema.co.uk to find out what's on and book tickets by calling 01598 753397. Seat prices: £5.00 for adults, £4.50 for senior citizens (65 and over), £3.00 for children (up to and including 14 years).

Some lovely walks to be had around Lynton & through Valley of Rocks. Visit the Tourist Information Centre in the Town Hall for more information and leaflets.

You cannot visit Lynton or Lynmouth without a trip on the Cliff Railway. It is 900 feet long and rises 500 feet vertically. The Victorian (opened on Easter Monday 1890) water powered railway is the only one of its kind in existence.

Opposite Lynmouth Harbour is the Flood Memorial Hall. The permanent free exhibition includes a scale model of the village pre-flood, along with images of the buildings which were destroyed and how to identify their sites. There are many personal accounts, photos, as well as material on the recent theory that it may have been the result of cloud-seeding experiments by the military. Below the museum you can read about the heroic overland lifeboat launch of 1899: 20 horses & 100 men hauled a 10 tonne lifeboat 13 miles, overnight in driving rain and wind, from Lynmouth, over Countisbury Hill to Porlock Weir to save a boat in difficulty in the Channel.

Where to Eat

Charlie Friday's, in Lynton, sells the best coffee in the area and the sweet treats are delicious!

Dogs are not only very welcome but loved and adored! Voted best café in North Devon!

Down in Lynmouth enjoy Paul & Sam's delicious food and fantastic views out over the sea, upstairs at the Exmoor Pavilion Dining Rooms. Alternatively the Rising Sun, a 16th Century thatched inn, serves delicious food in a warm & cosy atmosphere.

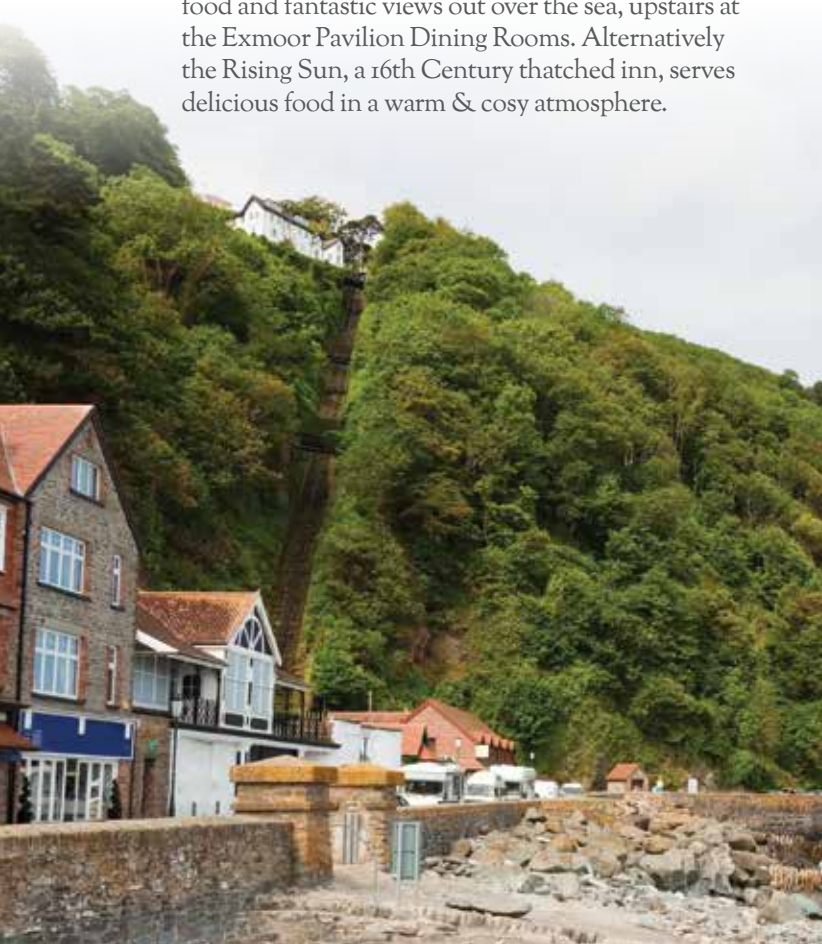
In the Area

Watersmeet House is a former fishing lodge dating from 1832. It stands at the bottom of a deep gorge where the East Lyn River and Hoar Oak Water meet. Now owned by the National Trust, you can enjoy a cream tea in the gardens and some shopping within the lodge. The walk from the car park on the road, down into the valley is steep but you can drive down and drop off or park with permission. EX35 6NT / 01598 753348.

The wild swimming in the East Lyn is regarded as some of the best in the country. Head up the East Lyn from the National Trust cafe heading for Rockford and find a swimming hole that suits you and laze away the day.

At the top of Countisbury Hill is the Blue Ball Inn, a favourite of ours for Sunday lunch. Some wonderful walks from the car park to Foreland Point, above the lighthouse, and down to Watersmeet House.

Stop off at Woody Bay Station, on the A39, on your way back to Longlands and take a journey on one of the last narrow gauge railways. The Lynton & Barnstaple railway closed in 1935 but a single mile of the original route was reopened in 2006. There are plans to extend the route on the original track bed to Lynton to the east and Blackmoor to the west and one day all the way back to Barnstaple, re-establishing the original 19 miles of railway.



Woolacombe & Morteohoe

You cannot come to stay at Longlands and not visit Woolacombe beach! The views over to Lundy alone make a visit worthwhile! And if that weren't enough: not only has Woolacombe beach been cited as the best British beach, but it is also recognised as one of the top ten beaches in the world! With three and a half miles of golden sands and at least 5 different beach areas (Putsborough, Middle Beach, Woolacombe Beach, Barricane & Combesgate) you can always find a spot with space.

Adjoining Woolacombe is the pretty stone built village of Morteohoe. It has many ancient buildings including a 13th Century church. It was even mentioned in the Domesday book! If you do nothing else, drive through it on the way home. The road loops back to the top of Woolacombe hill.

Getting There

Turn right out of Longlands and take the right of the two lefts signposted Woolacombe. At Berry Down Cross T junction turn left, then follow the road around to the right. At Lynton Cross, next to On a Hill Garage (24hour petrol should you need it), go straight over. At the Mullacott roundabout take the second exit to Woolacombe.

Once you reach the Pink House there are two alternative routes depending on whether you are in high season and what time of day you are travelling. If out of high season or early in the day you can simply follow the road all the way down into Woolacombe village.

In high season the huge queue up the hill can be avoided by turning left at the Pink House towards Georgeham & Croyde. Follow this road for 1.8 miles past a number of houses including High Bullen. Keep an eye out for a right hand turning opposite Little Roadway Farm Camping Park. Turn right and drive all the way down Challacombe Hill to one of 2 car parks.



Parking

The Woolacombe car park, run by the Parkin Estates, is the first car park you reach if coming down through the village, and the most expensive. Make sure you have plenty of coins! This will give you easy access to the Woolacombe beach where there are Life guards, but this part of the beach does get very crowded.

We prefer to park along Marine Drive, which is past the main car park and slightly up the hill on your right, if you have come via the village, or on your left coming down Challacombe Hill from the Georgeham/Croyde road.

This parking area will give you access to Middle beach through the dunes, if you drive along as far as you can go (about a mile and a half) you won't have far to walk to Putsborough! In high season there is a second team of Life Guards in this area.



What to Do

Surf - long board, short board or body board! Hunters Surf shop is the place to rent your gear or organise lessons. It is situated at the end of the Woolacombe car park, next to possibly the best loo block in the world! Also in the same patch is an ice cream parlour and pasty / pie shop!

All our family has learnt to surf at Putsborough at the other end of Woolacombe beach including Charlie in January at the age of seven. Rosie and Josh both waited until the spring to stand up.

Ride – horse rides along the beach and through the dunes can be organized with Woolacombe Stables. Call 01271 870260 / woolacombe-ridingstables.co.uk

Fly – Take to the air over Woolacombe Bay with Sam from Fly Like a Bird, on a Tandem Hang Glide! Talk about amazing views! Call Sam on 07875 247389 / flylikeabird.co.uk

Walks – The most obvious walk is from Woolacombe to Putsborough, along the beach or through the dunes. At Putsborough you will find a lovely Beach Café to reward your efforts. But you can also climb up to Potter's Hill from Marine Drive Car Park and enjoy spectacular views out to Lundy.

Other walks include setting out from Morteheo village car park to Bull Point Lighthouse or around Morte Point headland. Baggy Point, the southern headland, can be walked either from Putsborough Car Park or from Croyde. All these walks take in part of the Tarka Trail or South West Coast Path.

Where to Eat

At Beachcomber Café you can enjoy wonderful views of the beach and a delicious breakfast with freshly squeezed orange juice! They also serve jacket potatoes and other light lunch items.

The Boardwalk Bar and Restaurant has a fantastic setting and we hear good things about it but we have still to try it. Let us know what you think if you visit.

If you go to the Red Barn you can be sure of generous portions and quick service, even at its busiest. It is by no means the best food in the area but sometimes small children need feeding fast!

If you are staying between June and September and the weather is good then the Barricane Beach Café is a must. They serve baguettes and ciabatta in the day but in the evening you can sit on the beach and enjoy the most delicious Sri Lankan curry. Get there for 6.30 / 7pm as the queues get long and they stop taking orders at 8pm. Also remember to pick up a bottle from the Longlands Cellar to take with you as they don't have a licence.

Woolacombe is home to one of our favourite restaurants: NC@EX₃₄ on South Street. Noel Corston, owner and chef, has won numerous awards for his sensational food. As there are only 10 seats, all at the kitchen counter, booking is essential if you want to enjoy his tasting menu of seasonal, locally sourced produce. EX₃₄ 7BB / 01271 871187 / noelcorston.com



Georgeham & Croyde

Georgeham is the pretty village that you travel through to reach Putsborough or Croyde. There are two great pubs: the King's Arms and the Rock Inn. Look out for the blue plaque celebrating Georgeham's most famous resident, Henry Williamson, writer of Tarka the Otter.

The beautiful thatched village of Croyde is one of the top surfing destinations in the UK. In summer its crowded narrow roads make it almost impassable, so in high season get there early to miss the traffic.

Getting There

From Longlands travel towards Woolacombe. Turn right out of Longlands and take the right of the two lefts signposted Woolacombe. At Berry Down Cross T junction turn left, then follow the road around to the right. At Lynton Cross, next to On a Hill Garage (24hour petrol should you need it), go straight over. At the Mullacott roundabout take the second exit to Woolacombe.

At the Pink House turn left and follow the signs to Georgeham and Croyde. If you want to go to Putsborough turn right in front of the Kings Arms and wiggle along the narrow roads all the way to the beach. In summer this will take some time and involve lots of reversing into passing places!

Parking

There is parking at Putsborough above the beach. Remember to take cash for payment.

In Georgeham the village car park is past the Kings Arms, turn left and left again, following parking signs.

In Croyde there is also a central village car park but this is quite a distance from the beach. We prefer to park in the National Trust Car Park next to Sandleigh Tea Rooms on the northern, Baggy Point side of the beach. When you come into Croyde turn right and follow the National Trust signs. Parking for members is free.

What to Do

Surfing is the obvious activity for both Croyde & Putsborough and we always prefer to surf at Putsborough as it is nearer, not as crowded and has kinder waves.

For us it is the walk to Baggy Point have a swim if calm enough followed by lunch at Sandleigh Tea Rooms that takes us to Croyde. Park in the National Trust Car Park and follow the signs up the hill, you can then loop back along the coastal path. Stunning views!

Where to Eat

Sandleigh Tea Rooms is our favourite place to eat in Croyde particularly in good weather, when you can enjoy lunch in the garden, where they grow much of their own produce. Dogs are welcome.



Porlock

Porlock is a traditional Exmoor Village nestling in a hollow of the Exmoor coast, whilst Porlock Weir, only 2 miles away, is a quaint little harbour with a unique charm that has to be experienced. It also boasts the remains of a prehistoric forest, small parts of which are occasionally visible at a very low tide, and it was here that some remains of a prehistoric Aurochs were found. These are now on display in the Visitor Centre in Porlock.

The poets Wordsworth and Coleridge found Porlock very much to their liking and indeed Coleridge was interrupted by “a man from Porlock” whilst writing “Kubla Khan”; the consequence of which was that he lost his inspiration and never completed it!

Getting There

Turn left out of Longlands onto the A399 and turn off to Lynton on the A39. Turn left at Barbrook, and drive down the steep hill into Lynmouth. Then follow the A39, through Countisbury and on to Porlock, passing one of our favourite restaurants, the Culbone, before heading down the famous Porlock hill.

On your way home rather than climb Porlock Hill, take the Toll Road and enjoy the 4 miles through woods and heathers with stunning views.

Parking

There is a village car park at the end of the high street, on the right and there is a large car park at Porlock Weir.

What to Do

We head to Porlock to enjoy a meander along the High Street and some window, or actual shopping, followed by some fresh air at Porlock Weir.

Where to Eat

We have enjoyed great meals in lovely atmospheres at both Top Ship, in the village and Bottom Ship at Porlock Weir.

But one of our favourite restaurants, The Culbone, is just outside Porlock, on the way back to Longlands. TA24 8JW / 01643 862259 / theculbone.com



Ilfracombe

Ilfracombe has lots to see and do including Tunnels Beaches, voted one of the best rock pooling beaches in the country; the Harbour, which has one of the world's largest tidal change of 15m/50ft; Verity, Damien Hirst's 20m/66ft bronze sculpture; the Aquarium, and St Nicholas's Chapel & lighthouse with amazing views and lots of history.

You can also take a day trip to Lundy Island from Ilfracombe for a unique island experience in an area of Special Scientific Interest, surrounded by England's first Marine Conservation Zone or enjoy a Sea Safari.

Getting There

Turn right out of Longlands and drive through Combe Martin, then along through Watermouth and on to Ilfracombe. As you reach the start of the High Street there is a sharp right hand turn down to the harbour. Follow the road down to a T junction and turn right following harbour signs.

When returning to Longlands you can avoid the High Street by driving through the Life Boat car park joining the road back to Longlands opposite The Olde Thatched Inn.

Parking

At the next T junction opposite the RNLI shop you can turn either direction and find parking: left and to the end of the harbour under Verity, or right and then left in front of the Life Boat Station, or right and right again into the Old Bus Station Car Park.

There are other car parks near Tunnels Beaches and in front of the Landmark Theatre.

What to Do

Around the harbour itself you can admire or critique Verity, Damien Hirst's bronze statue which, at 66ft tall, and 10 inches taller than the Angel of the North, is the tallest statue in the UK. Hirst describes her as a modern allegory for truth and justice. If her stance looks familiar then it's because it's based on Edgar Degas' Little Dancer. You can also visit Hirst's gallery, Other Criteria, along the quayside, next to his restaurant.

St Nicholas Chapel & Lighthouse is a fascinating place steeped in history and an iconic landmark with incredible views of the harbour and over the Bristol Channel. It was built in 1321 and served as a Chapel for the town until Henry VIII dissolved the monasteries. Between 1835 and 1871 a Mr John Davey lived in the chapel as lighthouse keeper raising a family of 14 children! Since then it remained much neglected until 1962 when it was restored by the Rotarians of the town.

The Aquarium provides a fascinating insight into the watery world of North Devon. It houses a diverse collection of local aquatic life in beautifully recreated natural habitats starting from the source of an Exmoor stream, down river to the estuary, local rockpool, Ilfracombe Harbour, coast and to Lundy with its marine reserve.



The fascinating tunnels of Tunnels Beaches provide unique access to a beautiful area of coastline inaccessible by any other means. Hand carved in the 1820s, these four tunnels provide a truly unique experience for young & old. In the low half of the tide this is one of the best rock pooling beaches in the UK!

Enjoy live shows, bands and performances at the Landmark Theatre, North Devon's newest, and certainly strangest looking arts and entertainment complex. To check what's on call 01271 865655 or visit parkwoodtheatres.co.uk. To book tickets call the box office on 01271 316063. EX34 9BZ

If you like a good ghost story and a bit of a scare then make sure you visit Chambercombe Manor, one of Britain's most haunted houses! The beautiful 11th Century Manor has eight rooms to explore as well as 4 acres of gardens to wander around. EX34 9RJ / 01271 862624 / chambercombemanor.org.uk

If you want to really get away from it all why not spend a day on the island of Lundy, 3 miles long 1/2 mile wide, 12 miles off North Devon coast. It is home to rare species of plants, mammals and birds, including puffins, and has been designated an Area of Special Scientific Interest and England's first Marine Conservation Zone. The MS Oldenburg sails from the harbour and has space for 267 passengers in comfortable heated saloons, bar & buffet. 01271 863636.

You don't have to go as far as Lundy to enjoy the sea-life. A sea Safari from Ilfracombe might have you spotting Dave the dolphin and even the odd whale! 01271 863398 / bristolchannelcharters.co.uk

Where to Eat

If you are a fan of Damien Hirst's works then visit his restaurant, Number 11 The Quay and enjoy a meal surrounded by original Hirst artwork. Upstairs you can enjoy wonderful views of the harbour from

The Harbourside Room, or look out over the sea from the Atlantic Room.

EX34 9EQ / 01271 868090 / 11thequay.co.uk

The Espresso bar, on St James Place, comes highly recommended and previous guests have loved it, but we have yet to visit ourselves. We hear that the Moules Marinere is particularly good! All food is locally sourced with the crab and lobster caught just off Ilfracombe!

1 St James Place, EX34 9BH / 01271 855485 / seafoodrestaurantilfracombe.co.uk

Another restaurant serving sensational seafood is Relish on Fore Street (No. 10). EX34 9ED / 01271 863837 / fishbistroilfracombe.co.uk. Just a little further up Fore Street is La Gendarmerie (No. 63), a stylish mode brasserie in the Old Police Station serving delicious locally sourced food. 01271 865984 / lagendarmerie.co.uk. Then practically next door (No. 56) is the Olive Room where Thomas Carr has recently won a Michelin Star for his sensational dishes. 01271 867831 / thomascarrchef.co.uk. If you are wanting to eat with children The Starter Bar is my children's top recommendation. They love having a range of starters with a fantastic ice cream sundae to finish.

For ice cream without the sundae don't forget to visit Joe Delucci's on the Quay. Their ice cream, or gelato as they call it, is incredible!



Dulverton

Dulverton sits on the southern border of Exmoor, at the foot of the Barle Valley. It has a long history with many Iron Age forts around it and a mention in the Domesday book. You could be forgiven for feeling that you had stepped back in time walking its quaint and sleepy streets.

Getting There

The 25 mile journey to Dulverton takes you right through the heart of Exmoor. It really is worth going for the journey alone. Turn left out of Longlands on to the A399. After 3.5 miles turn left onto the B3358 following signs to Challacombe & Simonsbath. In Simonsbath turn right onto the B3223. After 4.5 miles on a long straight stretch there is a right hand turn off to Dulverton. After 9.5 miles on this road you will reach Dulverton. The Tarr steps lie 6 miles along this road.

For some different, and possibly even better views, on the return trip, in Simonsbath don't turn off left to Challacombe and the B3358 but continue on the B3223 to Lynton & Lynmouth. Then follow the A39 back to the A399 and on to Longlands.

What to Do

Just 4 miles outside of Dulverton off the B3223 are the Tarr Steps, an ancient clapper bridge spanning the River Barle and dating from 1000BC. It is made up of 17 massive slabs of stone each weighting 1-2 tonnes. There is a lovely circular walk along the rivers edge and in warm weather there are lots of shallow pools to play in.

There are many lovely antique, boutique and gift shops in Dulverton. On the High Street there is Number Seven & Brimblecombe for arts, crafts & gifts, and the Wardrobe and C.King for gorgeous clothes and accessories, to name but few of our favourites.

Where to Eat

If visiting the Tarr Steps, Tarr Farm is the place to eat. A lovely pub with fantastic food and loads of history! If you are going to use Sat Nav to reach Tarr Farm then the postcode TA22 9QA is the one to use! This will take you to Liscombe Farm above Tarr Farm, then follow the signs. Their actual post code will take you to the wrong side of the river which is impassable! 01643 851507 / tarrfarm.co.uk

If you want a pub, restaurant or wine bar then Woods is the place for you. Warm, cosy atmosphere with real log fires and delicious food. It won National Wine Pub of the year 2014!
TA22 9BU / 01398 324007 / woodsdulverton.co.uk

If you want a good cup of coffee then head to the Tantivy.



Dunster

Dunster is a beautiful medieval town just inland from Minehead. It has a wealth of shops and historical buildings including 11th century Dunster Castle and the Old Yarn Market, the historical centre for Exmoor's wool & cloth trade. In fact Dunster has over 200 listed buildings ensuring its unique historic qualities are preserved for future generations!

Getting There

We suggest that you go to Dunster across Exmoor and come back via the coast road. The 28 mile journey across Exmoor takes you through Challacombe, Simonsbath, Exford and Wheddons Cross. Turn left out of Longlands on to the A399. After 3.5 miles turn left onto the B3358 following signs to Challacombe & Simonsbath. In Simonsbath turn right onto the B3223. Follow signs into Exford and turn left over the bridge going through the village and onto Wheddons Cross. At Wheddons Cross turn left following signs to Dunster.

On the way back turn left on the A39 following signs to Porlock, which is worth a stop if you have time. The A39 is said to be one of the most scenic roads in the country and you will appreciate why as you come out of Porlock, through County Gate and Countisbury and down into Lynmouth. Unless you want to add a further 9 miles to your journey when in Lynmouth don't turn right to Watersmeet but carry on up the hill, past the Lyn Gorge and through Lynbridge, turning right to rejoin the A39. At the A399 turn right and head home to Longlands.

Parking

There is a town car park past the Old Yarn Market on the right. But if you are National Trust members continue all the way through the town and turn right onto the A39 and right into the Castle's car park.

What to Do

The Castle is well worth a visit with rooms full of fascinating things and wonderful historical artefacts. Remember to pick up the list of things for children to look for in each room. The gardens are also beautiful and a pleasure to stroll around.

There are lots of lovely shops to visit. Some of our favourites include The Nutcombe Chocolate shop for chocolate, Humming Bird & Home Coming for gifts, Raft for clothes, the Horse & Crook for lanterns, planters, hand cream...to name a few.

Where to Eat

Our favourite place is Tessa's Tea Rooms. We love their Tascas - a kind of toasted sandwich but different! There is a courtyard at the back if the weather is good.





A little further afield

If you have had enough of beaches and Exmoor then the following are definitely worth visiting:

Instow & Appledore

Instow lies on the estuary where the rivers Torridge and Taw meet. Enjoy a stroll along the sea front and the view across the Torridge. Then catch the ferry across to the quaint fishing village of Appledore. Many of the fisherman's cottages date back to Elizabethan times.

The Boathouse Restaurant in Instow comes highly recommended.
EX39 4JJ / 01271 861292 / instow.net/boathouse

The Seagate Hotel is our favourite place to lunch in Appledore. EX39 1QS / 01271 472589 / theseagate.co.uk

Clovelly

Clovelly claims to be one of the most famous villages in the world. Its steep cobbled high street winds past 16th century white washed cottages down to the ancient harbour. No cars are allowed – they couldn't cope with the gradient – instead donkeys are used to ferry goods and people up and down. Sensible shoes are advised and an admissions fee is charged. EX39 5TA / clovelly.co.uk





Beaches

Woolacombe Beaches:

Putsborough
Middle Beach
Woolacombe Village
Barricane
Combesgate
Grunta

Other Beaches:

Ilfracombe Tunnels Beach
Combe Martin
Croyde
Saunton Sands

Secret Beaches:

Broad Sands
Rockham
Wild Pear
Lee Bay

How to find our Secret Beaches

Broad Sands:

1.5 miles west of Combe Martin (A399 dir Ilfracombe) turn right into Barton Hill. Park near Sandy Bay Hotel (EX34 9SR) best view for an after beach drink. Bear left/west along coast path until you reach the 200(ish) steps down.

Rockham:

Park in North Morte Farm in Mortehoe (EX34 7EG). Remember to pay for your parking at reception. Then follow the signs! Access to the beach is via steep steps.

Wild Pear:

Park in Combe Martin village car park and take the footpath at the northern end. This should take you up to the coast path and over to Wild Pear. Be warned - this is a naturist beach!

Lee Bay:

Follow the coastal road to Woody bay, via Hunters Inn or Valley of the Rocks, and park in Lee Abbey Car Park, next to the Tea Cottage. No dogs between May and October.

Beautiful gardens

There are also many beautiful gardens to explore in North Devon including:

Broom Hill Sculpture Garden - EX34 4EX / 01271 850262 / broomhillart.co.uk/sculpturegardens

Castle Hill EX32 0RQ / 01598 760336 / castlehilldevon.co.uk/garden

Marwood Hill Gardens EX31 4EB / 01271 342528 / marwoodhillgarden.co.uk

RHS Rosemoor EX38 8PH / 01805 624067 / rhs.org.uk/gardens/rosemoor

Tapeley Park EX39 45NT / 01271 860897 / tapeleygardens.com

Hartland Abbey EX39 6DT / 01237 441496 / hartlandabbey.com

Docton Mill EX39 6EA / 01237 441639 / doctonmill.co.uk



Best for Small Children

Woolacombe Beach - Build a towering sandcastle

Tunnels Beaches - Explore the rock pools

Exmoor Zoo - Meet the Beast of Exmoor

Woody Bay - Ride on a train like Thomas!

Watermouth Theme Park - Swing on the merry go rounds!

Best for Older Kids

Woolacombe Beach - Catch some waves!

Exmoor Safari - Meet some locals - deer & ponies that is!

Rock & Rapids - How high can you climb?

Watersmeet - Discover hidden valleys and rushing rivers

The Ultimate Adventure Centre - Take the plunge on the assault course!



Best for Dogs

Woolacombe Beach - Race for the ball!

Lynton & Lynmouth - Make some new friends!

Watersmeet - Get wet & muddy!

Tarka Trail - Enjoy those views!



Best for the Less Mobile

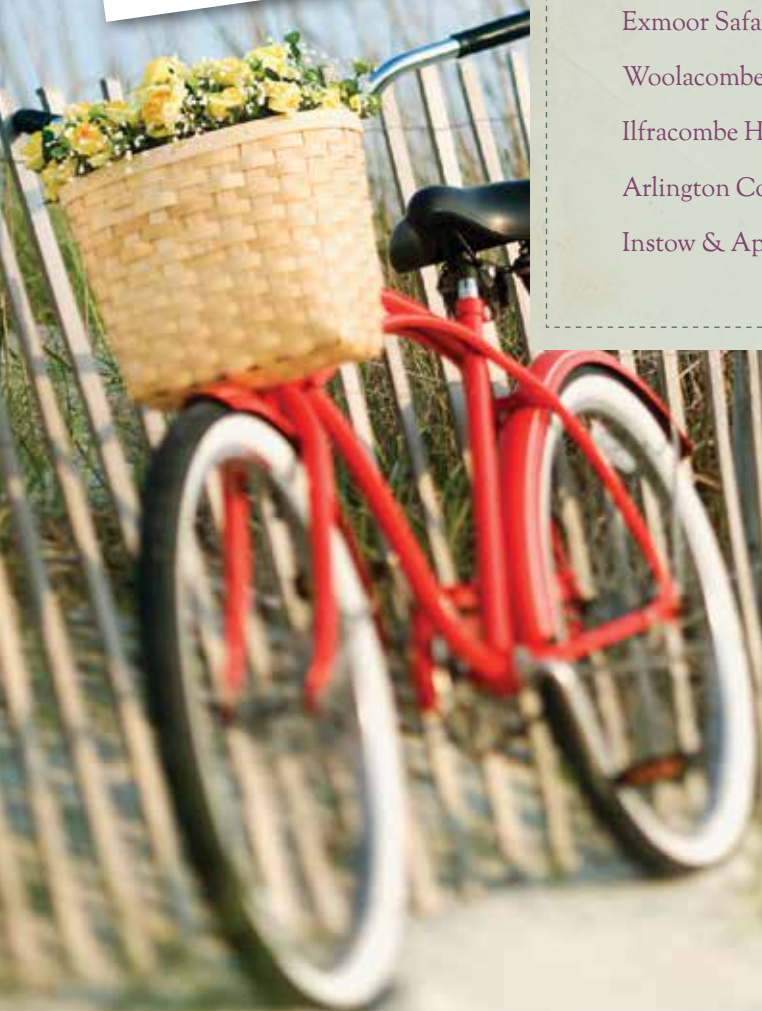
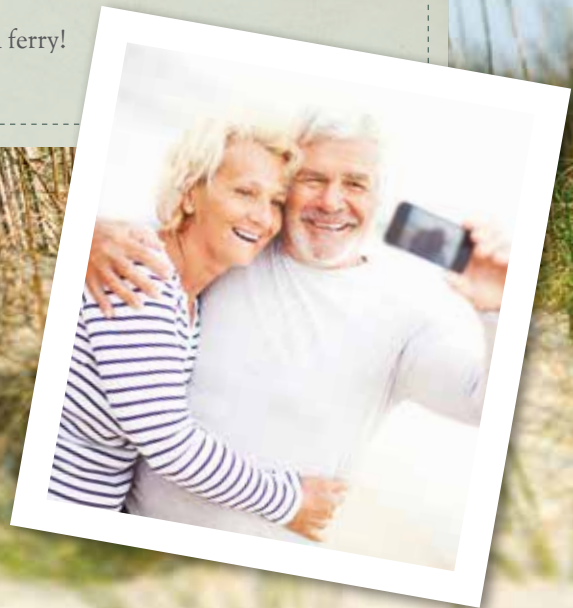
Exmoor Safari - Enjoy the ride!

Woolacombe - Easy beach access

Ilfracombe Harbour - Watch the world go by!

Arlington Court - Scoot around the gardens!

Instow & Appledore - Flat with ferry!



Eating at Lenglands

Let us cook for you so you can...

Spend a little longer at the beach. Get lost in a good book. Succeed in your quest for World Domination (in Risk!). Pour yourself a glass of wine.

Sit back. Put your feet up.

Simply choose from our range of breakfast, picnic and BBQ meals. Mark your choices on an order form. Place in the Larder by 8pm. Or enjoy a meal by Cook from our large freezer selection. We will deliver or send the children to collect. No money needed! Just write your purchases on your clip board and settle the bill at the end. Simply Delicious made Deliciously Simple!





Award winning produce from local suppliers

Our steak pasty, made by Chunk of Devon, won the coveted Best British Pasty 2020 ! All our other pasties and pies are from Chunk of Devon and every one of them has been given an award for great taste. Make sure you try them all!

We are lucky enough to have Quicke's here in Devon who have been recognized recently at the British Cheese Awards, World Cheese Awards, International Cheese Awards and Great Taste Awards as well as Taste of the West and Artisan Cheese Awards... cheese doesn't more highly decorated than this !

We like Luscombe drinks so much we even named a lodge after them!

Every single flavour is an award winner!

As are our jams, chutneys, yoghurts and ice creams.

If it doesn't taste wonderful and isn't from Devon, or at least the West Country, we won't sell it!





Local pubs & restaurants

Our Favourites

The Black Venus in Challacombe, 6 miles away, is our favourite local pub. It is a 16th century stone built pub with original beams, lots of character and delicious food. You cannot book and it is always packed so get there early! Dogs welcome in the bar area. EX31 4TT / 01598 763251 / blackvenusinn.co.uk

Sandy Cove Hotel above Combe Martin has the best sun deck for watching the sun set at the end of a long day at the beach, our favourite place to stop on the way home. It also has two restaurants and an extensive children's menu. EX34 9SR/01271 615180/sandycove-hotel.co.uk

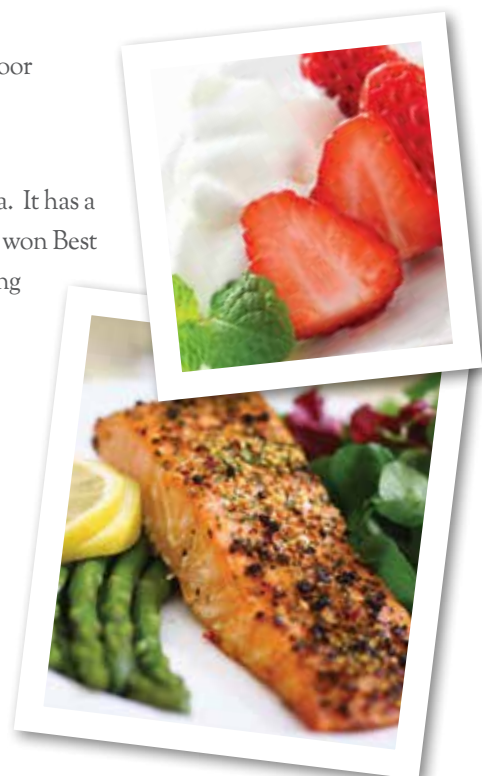
The Blue Ball at Countisbury, is our favourite pub on Exmoor for Sunday lunch. We recommend you enjoy some of the spectacular hiking and walking trails over Exmoor before sitting down to a well-earned rest and delicious meal. Dogs welcome. EX35 6NE / 01598 741263 / blueballinn.com

The Kings Arms in Georgeham, is our favourite pub in the Woolacombe / Croyde area. It has a great atmosphere, delicious food, friendly staff and a fantastic selection of beers. They won Best Sunday Roast last year in the Devon Life Food Awards for good reason. Worth booking ahead. EX33 1JJ / 01271 890240 / kingsarmsgeorgeham.co.uk

NC@EX34 is our favourite restaurant, anywhere! It has won numerous awards for its incredible food, all of which is cooked by Noel Corston himself. He offers a tasting menu of 5 or 8 courses made from seasonal local produce. A must for any foodie! EX34 7BB / 01271 871187 / noelcorston.com

The Coach House Restaurant at Kentisbury Grange, has won Best Restaurant in the South West for the past two years, under the wings of Michelin starred chef Michael Caines. Sensational food in sumptuous surroundings. Perfect for a special occasion. EX31 4NL / 01271 882295 / kentisburygrange.com

The Culbone, near Porlock, is possibly the best restaurant on Exmoor and another favourite Sunday lunch destination. It is almost worth going just for the stunning 18 mile drive along the Exmoor coast! TA24 8JW / 01643 862259 / theculbone.com



Other Recommendations

Fox & Goose in Parracombe is the nearest pub to Longlands just 4 miles away. It serves great food, has a wonderful atmosphere and is a favourite with locals. Dogs welcome. EX31 4PE / 01598 763239 / foxandgooseinnexmoor.co.uk

The Hunters Inn, in the beautiful Heddon Valley, on Exmoor, is 5 miles away. It is the perfect place to eat following a gentle walk down to the beautiful pebble beach at Heddon's Mouth. Dogs welcome.

EX31 4PY / 01598 763230 / thehuntersinnexmoor.co.uk

Sawmills in Watermouth Harbour lies the other side of Combe Martin on the way to Ilfracombe. We love their burgers, nachos and tapas.

EX34 9SJ / 01271 883388 / oldasawmills.co.uk

Pyne Arms in East Down has won numerous awards for its food, including best pub of the year in the Devon Life Food and Drink awards. Fantastic seasonal food and one of the best Sunday lunches around!

EX31 4LX / 01271 850055 / pynearms.co.uk

Black Sands Bistro on St James Parade in Ilfracombe is fun & friendly, serving fantastic food & fabulous cocktails.

EX34 9BH / 01271 523296

If you are a Damien Hirst fan then *it*, The Quay in Ilfracombe is a must. You can dine surrounded by original Damien Hirst pieces and walk to the end of the harbour to see his latest work, the 20m, 250 tonne bronze statue, Verity. EX34 9EQ / 01271 868090 / ithequay.co.uk

Relish on Fore Street is the place to go for great seafood. EX34 9ED / 01271 863837 / fishbistroilfracombe.co.uk

If the Kings Arms in Georgeham is full then the The Rock Inn over the road is an excellent fall back. A beautiful 17th Century Inn with an excellent menu for both adults and children. Dogs welcome.

EX33 1JW / 01271 890322 / therockinn.biz

The Rising Sun in Lynmouth is a beautiful 14th century thatched inn, overlooking the Lyn River and Lynmouth Harbour, serving local fish, Exmoor Game and other locally sourced produce. EX35 6EG / 01598 753223 / risingsunlynmouth.co.uk

If you find yourself hungry in the Barnstaple and Braunton area the Braunton Inn is the place to go: delicious food, including pies from James Martin, lovely atmosphere, warm fires and great views over the estuary.

EX31 4AX / 01271 816547 / vintageinn.co.uk/thebrauntoninnbarnstaple/

The Barricane Beach Cafe serves the most delicious curry in one of the most beautiful settings. Just remember to pick up a bottle from the Longlands Cellar as they don't have a licence. EX34 7DJ / 07969 189304



We hope you enjoy your adventure at Longlands and we look forward to seeing you again soon.

